



## Fuglsbølle Church

A medieval church consisting of Romanesque nave with a late Gothic chancel (Romanesque style=Norman style in England). With the porch in the South and vestry to the north. Above the church's West wall is a ridge turret with shingled spire renovated in 2010. It replaces a tower supposedly taken down in the 1700's. The nave has a flat ceiling. From the middle of the 1600's until 1919 the church was part of Tranekær Estate. The letters F.A. 1861 can be seen in the weather vane - (Frederik Ahlefeldt).



*The Porch*

[www.fuglsboellekirke.dk](http://www.fuglsboellekirke.dk)





### Altar Piece

The altar piece is Renaissance work from about 1600. The centre piece protrudes and is supported by columns. Within the centre piece is a late Gothic crucifix. The niches in the side panels contain statuettes of the evangelist John (the eagle) and the apostle Peter (the key).

### The Communion

Table is covered by an antependium made by the church artist Elisabeth Hofman. The pattern is the same as we find on the mantle.

### Chalice

Chalice from ca. 1660 donated by Rudbæk von Deden and his wife, Hilleborg Grubbe.

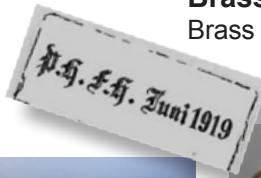
### 7-armed candelabrum

7-armed candelabrum from June 1919 bearing the initials P.H.F.H.



### Brass candle sticks

Brass candle sticks from 1648 with the coats of arms of Deden and Pors (local dignitaries).



### Church organ

The organ has 6 voices on one manual and pedals and was built by Messrs. Bruno Christensen & Sons, Terkelsbøl, in 1992. Mr. Ebbe Lehn Petersen, the architect, has designed the face.

### Church bell

The church bell is from 1745. Cast by Johannes Barth Holtzmann.



### The Baptism-font

Romanesque granite font with a simple archade frieze containing a copper tray and a silver stoup, both without any engravings.

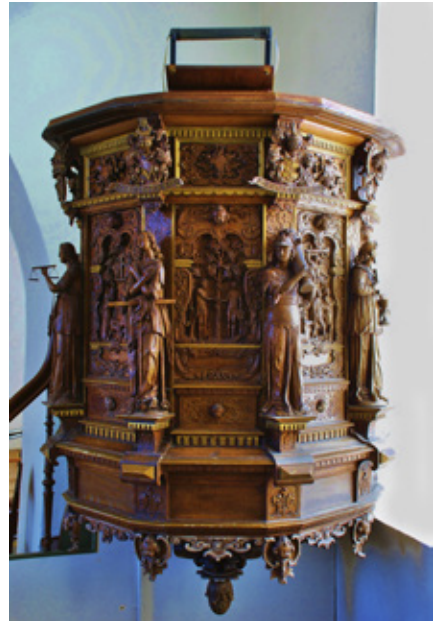
## Pulpit

A fine example of baroque carving worked by Lorentz Jørgensen in 1644 with the escutcheon of H. Christoffer Urne and F. Sophie Lindenow in addition to the monogram of Christian IV.



The pulpit originates from Tranekær church, which was re-furbished as part of a major reconstruction in 1886.

A matching altar piece in similar style and by the same craftsman can be seen in Stoense church on North Langeland. The panels show carved scenes from the story of the Creation separated by 5 figures symbolizing various virtues (from the left to right): Caritas (love), woman carrying a child. Justitia (justice), woman with sword and scales. Spes (hope), woman with anchor. Fortituda (bravery/strength), woman with pillar. Fides (faith), woman with cross and chalice.



## Mantle

The mantle is sewn in raw silk with gold embroidered symbol of trinity on the back and a Greek cross collation on the front. Designed by Elisabeth Hofman I 1994.



*The benches in the church*

## Relief In the series "The ears of corn"

Commissioned in 2010 from the artist Markan Christensen. The same artist has also made a relief situated in Skrøbelev Church.



## Memorial tablet

On the North wall a memorial tablet to the donors of the foundation: Niels Hansen to Skovsbo and his wife, Birgitte Sophie née Olufsdatter.



## Church ship

The church ship was built in 1929-30 by Erik J. Larsen, who donated it to Fuglsbølle church the year after his confirmation. The ship is a model of the frigate "Jylland" and is equipped with 30 canons, 2 able seamen and 2 naval officers.



## Headstone

There are number of old headstones on the lawn to the South of the chancel. The one pictured here has been registered by the museum authorities as worthy of preservation. The stone is granite from the island of Bornholm and is carved with laurel wreath and a text from the bible. (1. Corinthians 15.10).



*Part of the churchyard for burial of urns*





## Reparation of the ridge in 2010

Renovation of the ridge and renewal of the shingle roof in 2010. The ridge-construction was strongly damaged by corrosion in the earlier placed steel rafters, part of the rafters were totally rusted away. It was decided to take the construction back to its original form, where it was a covered half-timber construction, the cover is made with wooden boards 1 on 2. In connection with the works the tarred shingle roof cover was renewed, as it was in bad condition.

The photos are taken by consulting engineer P. Riisøe-Hansen and the drawing office of architect Lehn Petersen.



*Photo; The shingle roof placed on the ground during the reparation.*

